

## **Field Visit to South Indian Kimberlites (Offered Pre: Conference and Post: Conference)**

**Team Leaders:** Dr. S.S. Nayak, Superintending Geologist, Geological Survey of India, Bangalore; Dr. S. Ravi, Senior Geologist, Geological Survey of India, Hyderabad ; Sri K.S. Bhaskara Rao, Senior Geologist, Geological Survey of India, Chennai; Sri K.V.Suryanarayana Rao, De Beers.

**Dates:** Pre-conference – Wednesday 1st February 2012 to Monday, 6th February 2012. Post Conference – Sunday 12th February 2012 to Friday 17th February 2012.

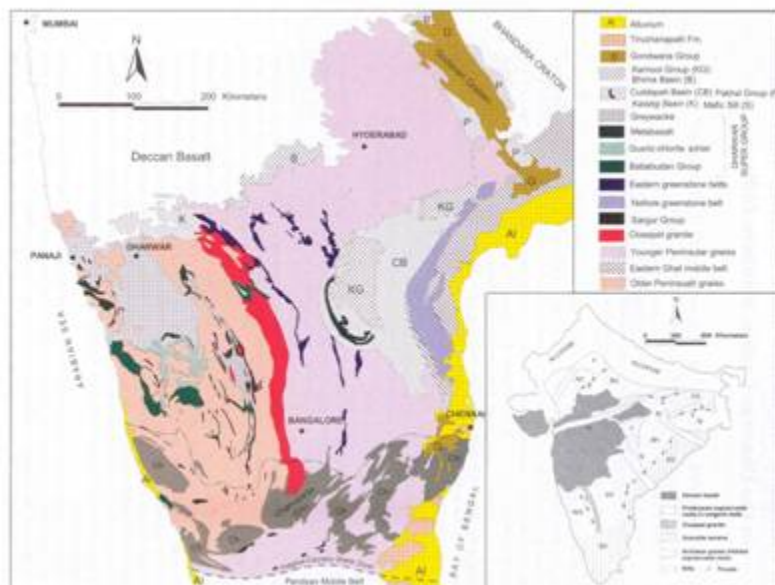
**Field Trip Cost : 36,000 INR (600 €):** The cost includes air conditioned rail and road transport, breakfast, pack lunch, and dinners, Pick-ups and transport to air ports, five night's hotel accommodation (please see the details below).

### **Please note the following:**

- The field trips are financially self supported, would be conducted on no profit and no loss basis. If field trip finishes with a significant surplus refunds will be made to the delegates.

**Number of Participants:** The maximum number of participants on the pre- and post-conference field trips is 30. A minimum number of 20 participants would be required to run each of the field trips. The participants are requested to indicate clearly their preferences when registering. The field trip registration would be provided on first come first serve basis.

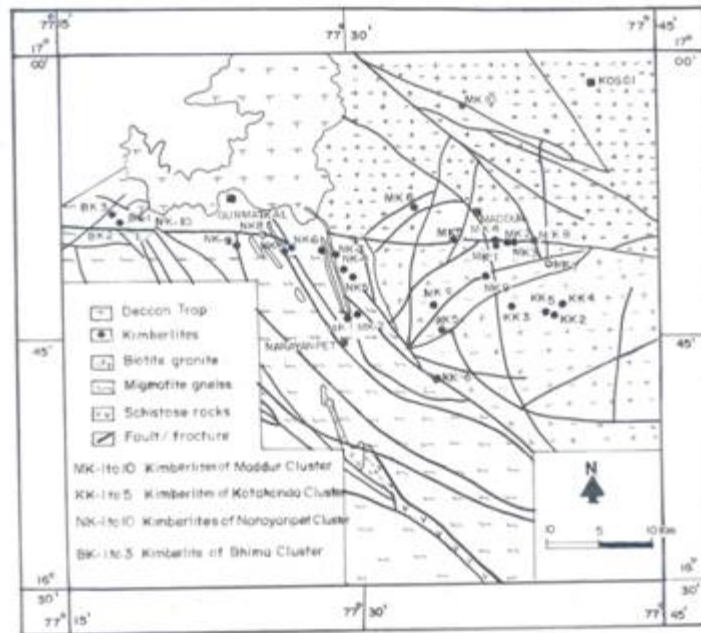
**General Description:** Southern India, the land of first diamond finds in the world, consists of both primary and secondary deposits for diamond in Archaean granite-greenstone terrains of Dharwar Craton. The Krishna Valley from this part of India is known to have produced the most celebrated diamonds viz. the Koh-i-Noor, the Great Mogul, the Orloff, etc. The area witnessed hectic diamond mining activity during 13th - 18th centuries AD.



**Geological Map of Dharwar Craton in Southern India**



**Geological Map of Wajrakarur Kimberlite Field**



**Geological Map of Narayanpet Kimberlite Field**

There are more than 100 kimberlite intrusions known in the Dharwar craton spread over the states of Andhra Pradesh and Karnataka, in Southern India. The trip envisages visiting some of the kimberlites in the Wajrakarur and Raichur Kimberlite Fields. The participants will be exposed to

the drill cores and large size samples of those kimberlites, which are not covered under the itinerary at the Kimberlite Park and Museum, set up by the Geological Survey of India at its Wajrakarur Camp. Apart from the kimberlites, the trip itinerary would include visit to historic diamond mines

in the paleo-placers of the Neo Proterozoic sediments (Banganapalli Conglomerates) and the alluvial placers (Quaternary) near the confluence between the Krishna and Tungabhadra Rivers. The trip also includes visit to the Vijayanagara temple architecture (14th – 16th Century AD) at Lepakshi, and Belum Caves - the second largest natural caves in Indian sub-continent.

**Some Useful Comments:** Some other points pertinent to this field are:

- The month of February is one of the best periods to visit this part of India with the region is lush green. The weather is mildly warm to the maximum of 30 degrees Celsius during the day, however the nights could be nippy and down to about 15 degrees Celsius as the minimum.
- Accommodations at Anaparthi, Guntakal and Kurnool will be shared rooms in ordinary hotels. Cuisine in most places is likely to be Indian, which could be mildly spicy. The Hotels would provide multi-cuisine food, including continental. Safe bottled water is recommended for drinking and would be arranged.
- Adequate government security would be arranged for participants who stick to the IKC field group.
- Malaria and other mosquito borne diseases are rare in this region in the month of February, however, it would be advisable to consult your respective nation consulates or WHO sites on any health warnings.
- Field Trip Guide books will be posted in the website and printed copies with maps would be made available to all the participants.
- There would be adequate opportunity for collection of field samples at certain locations. The field party leaders would guide the participants about the sample collection. Participants who wish to collect samples are (i) invited to bring their preferred sampling equipments (ii) sample packing material and (iii) should be prepared to cover the cost of sample shipment.
- All road travels from Bangalore up to Raichur are by 35-seat air-conditioned luxury coach. Road travels from the main road to the kimberlite locations are by field vehicles. The rail travel for return journey from Raichur to Bangalore is by air conditioned rail coaches.
- There is no specific dress code for the field trip. But in view of local weather conditions light trousers and long-sleeved shirts are recommended.
- Participants must arrange for their own travel and medical insurance.
- The route map for the field trip can be viewed from

**Pre Conference Field Trip Itinerary**

01-02-2012 0800 Hrs	Leave Bangalore; Visit Lepakshi (12 km from Hindupur) Study of Granite – Greenstone terrain around Ramagiri Schist Belt; Fieldwork in Chigicherla Kimberlite (pipes 1, 4 & 5) area. Reach Anantapur – 1700 Hrs and halt. (Travel-200 km).
02-02-2012 0700 Hrs	Leave Anantapur. Examination of Kimberlite pipe KL – 2 at Kalyandurg, Pipe-5 at Muligiripalle and Pipes-3 & 4 at Lattavaram. Reach Guntakal 18 00 Hrs. Halt at Guntakal. (Travel-250 km).
03-02-2012 0800 Hs	Leave Guntakal; Examination of Kimberlite pipes – 1, 2, and 12 at Wajrakarur; Visit to Kimberlite park and Museum at Wajrakarur camp. Halt at Guntakal.
04-02-2012 0700 Hs	Leave Guntakal; traverse across the Cuddapah Basin; Visit to Belum caves; Examination of diamondiferous conglomerates and ancient diamond workings at Banganapalle. Reach Kurnool 1800 Hrs. Halt at Kurnool. (Travel – 250 km)
05-02-2012 0800 Hs	Leave Kurnool in the forenoon; Examination of Tungabhadra River gravels at Panchalingala; Examination of Raichur Kimberlites. Leave Raichur by night train.
<b>6th February, 2012:</b> Arrival Bangalore in the morning. Halt.	
<b>6th February, 2012: Evening – Join the Ice Breaker Party.</b>	

### **Registration & Refund guidelines for the Field Trip:**

Registration guidelines for the field trips are as follows:

- Only those persons are entitled for registration to the field trips who have registered for the main conference.
- Registration for the field trips requires full payment of appropriate fee.
- Field Trip Refunds: Refunds resulting from cancellation by a delegate are less 10% administration fee before 30th September, 2011. Between 1st October 2011 and 1st

December 2011 refunds will be 50% of the total field trip costs. There will be no refunds after 1st December, 2011.

- If field trips are cancelled by 10 IKC through insufficient participation prior to 1st December 2011, field trip payments will be refunded in full.
- If delegates are not allocated a place on any of the requested field trips, an option for the other field trip, if available, would be made available to the participants on the condition of payment/return of the differential fee of that field trip. In case the delegate is not interested in that option, the field trip payments will be refunded in full.
- All requests for cancellations of field trip participation must be received in writing by post, e-mail or fax by the Conference Secretariat. Cancellations are not accepted by telephone. All cancellations are subject to the limitations specified above.